



SISAB – AN INTRODUCTION



Skolfastigheter i Stockholm AB

since 1991





SISAB – AN INTRODUCTION



SISAB is one of the 17 Companies that form the Stockholms Stadshus Group, owned by the City of Stockholm.





Our vision

The preferred choice
in educational facilities





Our business idea

On behalf of the City of Stockholm, SISAB owns and manages the City's pre-schools and schools.



Our objective is to provide a sound, pleasant and practical educational environment.



Here is our area!

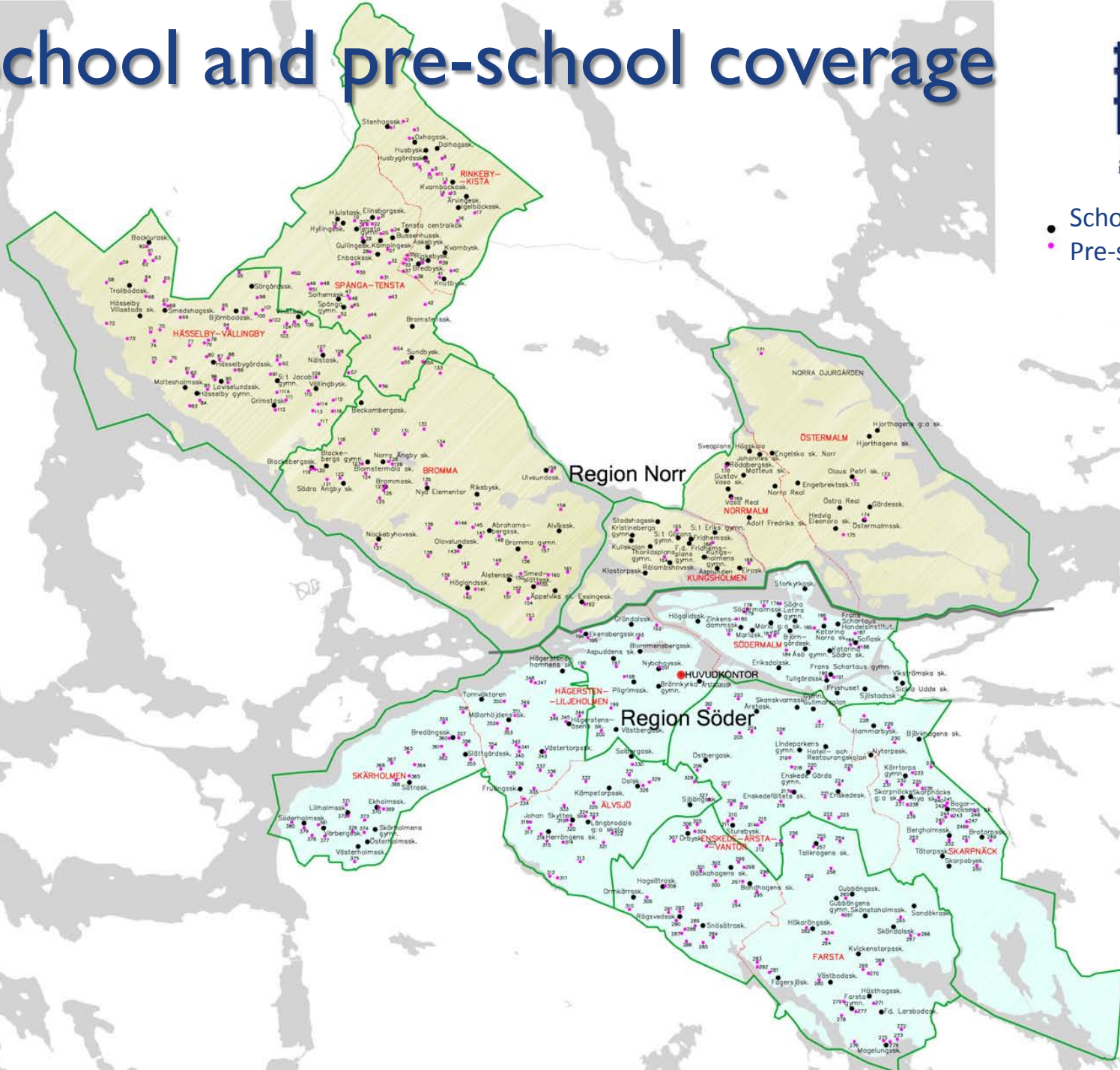


School and pre-school coverage



Skolfastigheter
i Stockholm AB

- School
- Pre-school





Property ratio

Our 400 pre-schools constitute 2/3 of the overall building stock but only 12 % of the surface area.

2/3 = 12% !?





”SISAB Boulevard”

190 schools
+
400 pre-schools
=
1.7 million square
metres

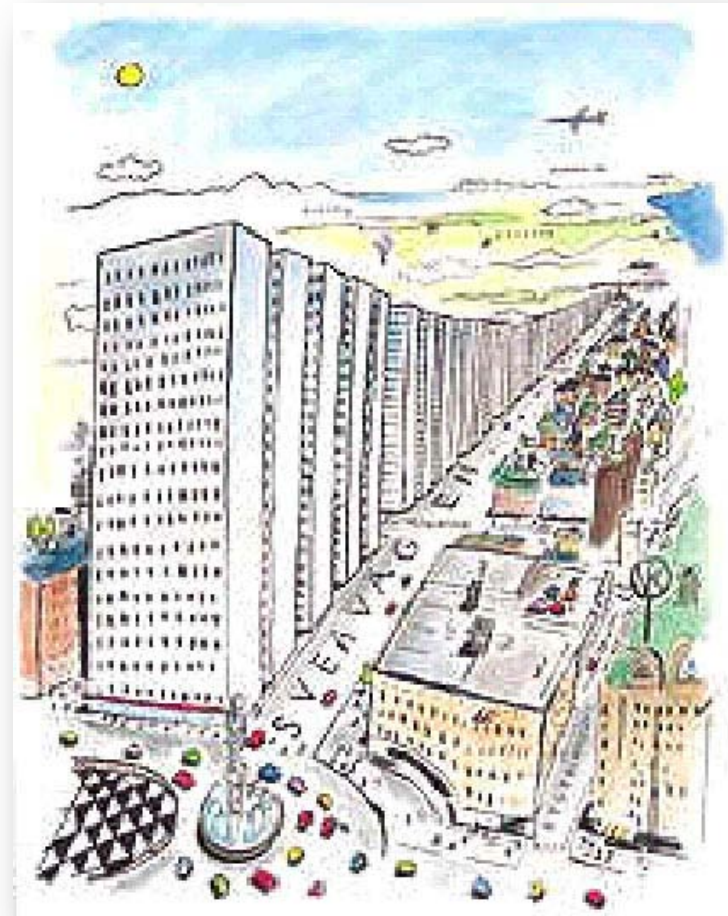




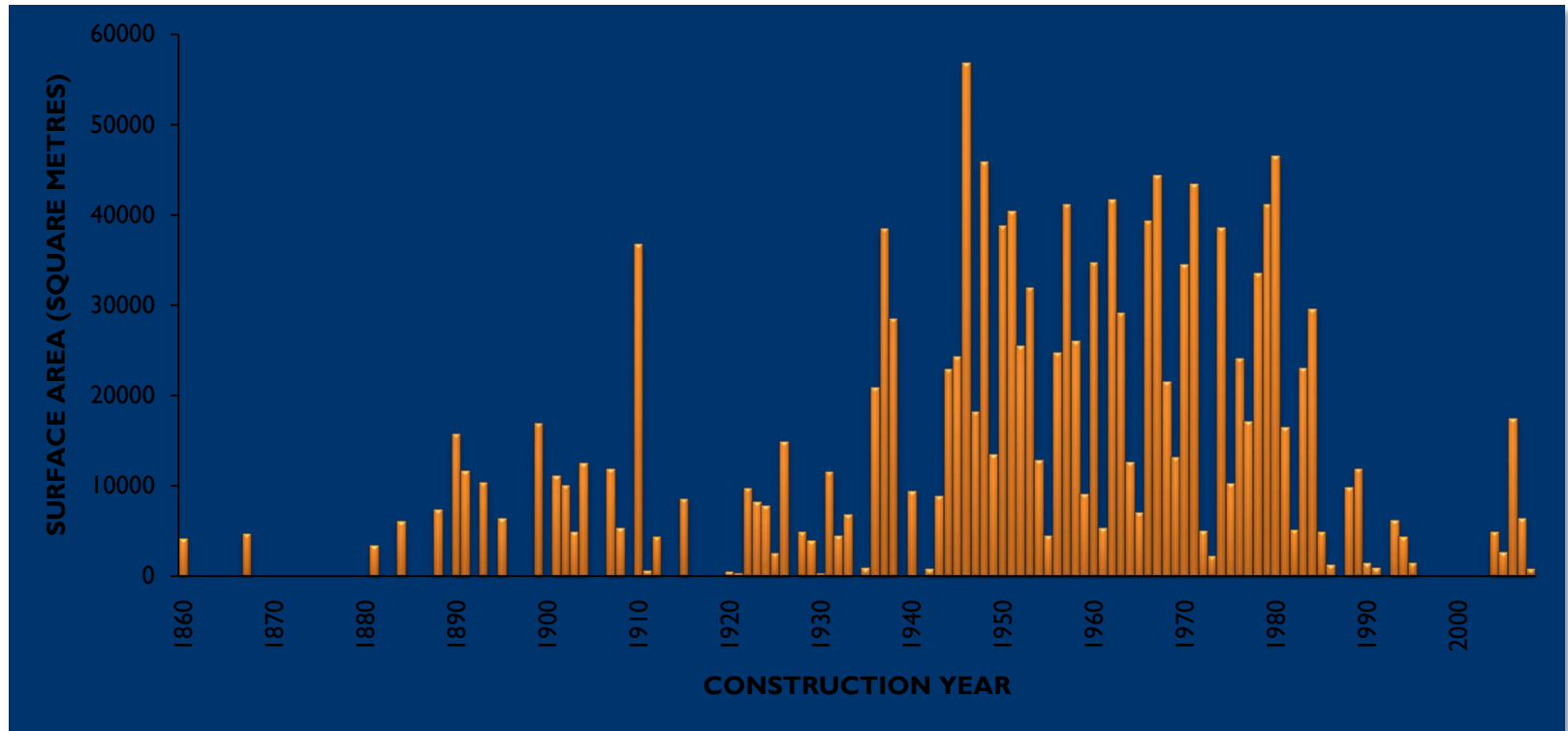
Photo: Lennart Johansson, Sbk/Infobild

Each day more than 100,000 children and adults visit our schools.





Construction year and school surface area



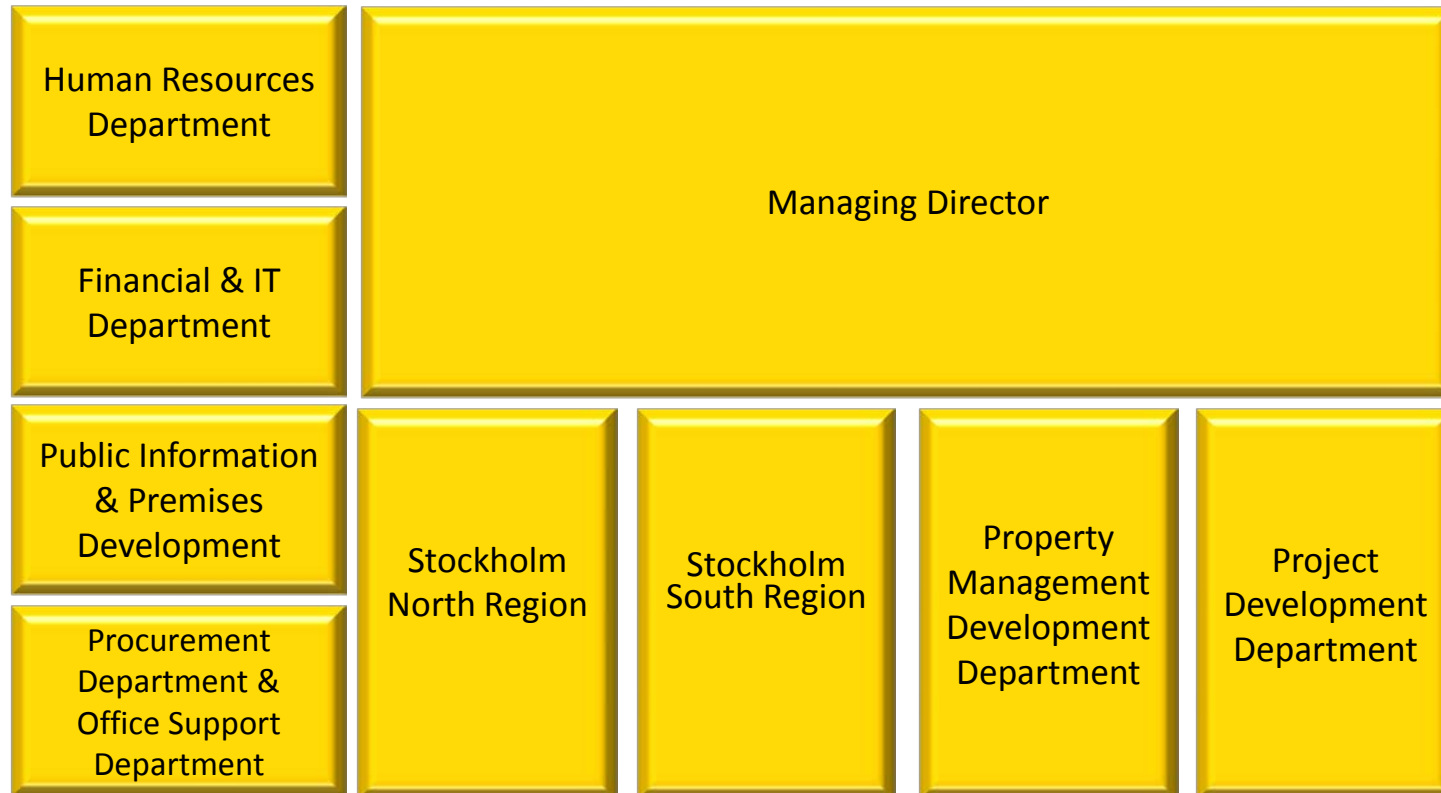
The oldest school: Maria Gamla skola, established in 1860

The smallest school: Vitsippan pre-school, 100 square metres

The largest school: Åsö gymnasium, nearly 40,000 square metres



Our organisation





Our customers

- **The City of Stockholm District Councils**
(pre-schools)
- **The City's Education Administration**
(compulsory schools, after-school centres, upper secondary schools and municipal adult education)
- **Privately owned schools**
- **External tenants**





Finances

SISAB's properties are rented out according to a prime cost principle, that is, the rent shall cover the costs for:

- capital expenditure
- management
- maintenance
- administration

The *average rent* is 950 SEK per square metre and year.





SISAB annually invests approximately 500 million SEK in maintenance, new construction and rebuilding of schools in Stockholm.



Environmental focus

Since many years, environmental responsibility has characterised all SISAB's operations. Indoor climate in schools and pre-schools is a priority issue and we continuously seek environmental improvements.





In our buildings, people should feel good!





The preferred choice in educational facilities

